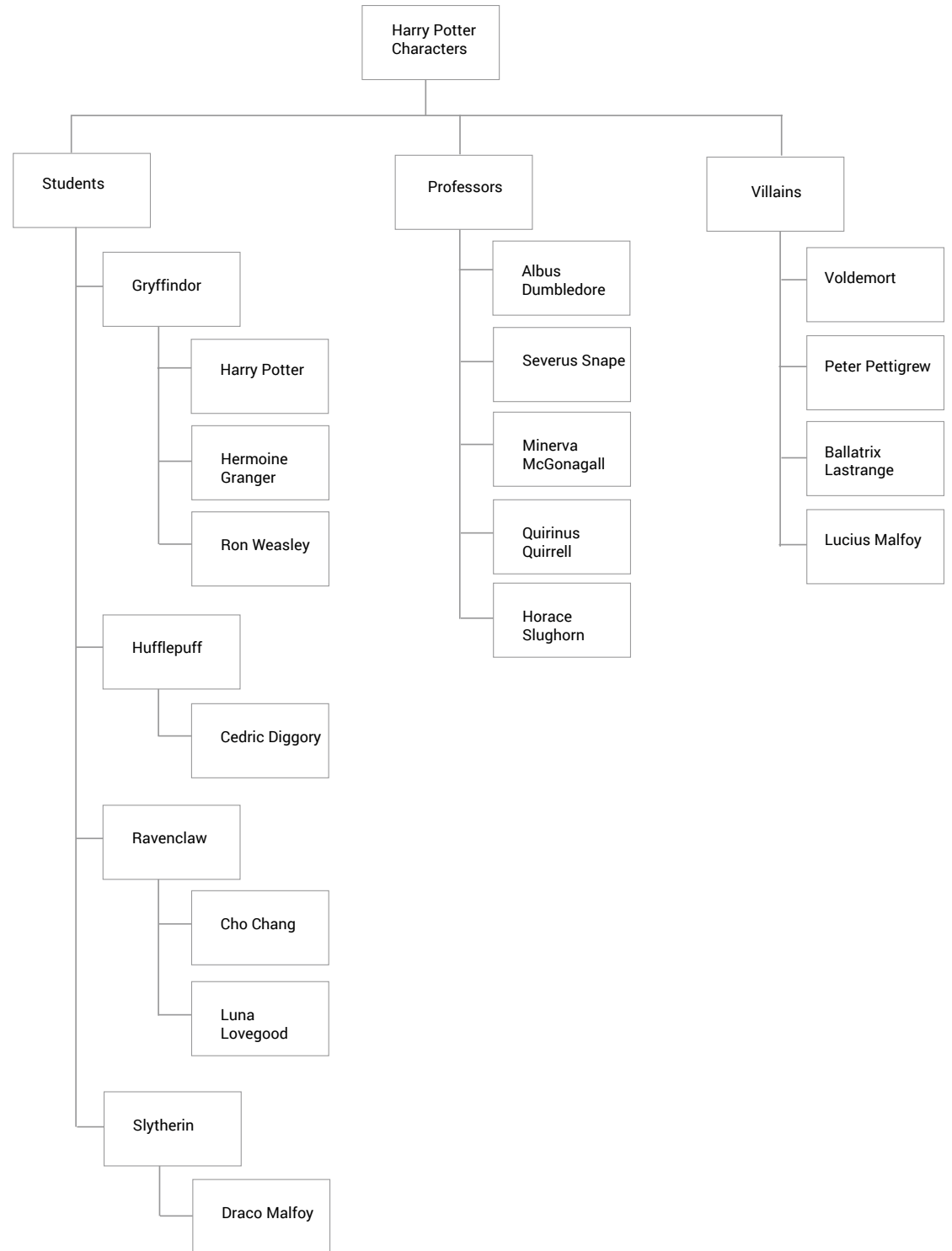


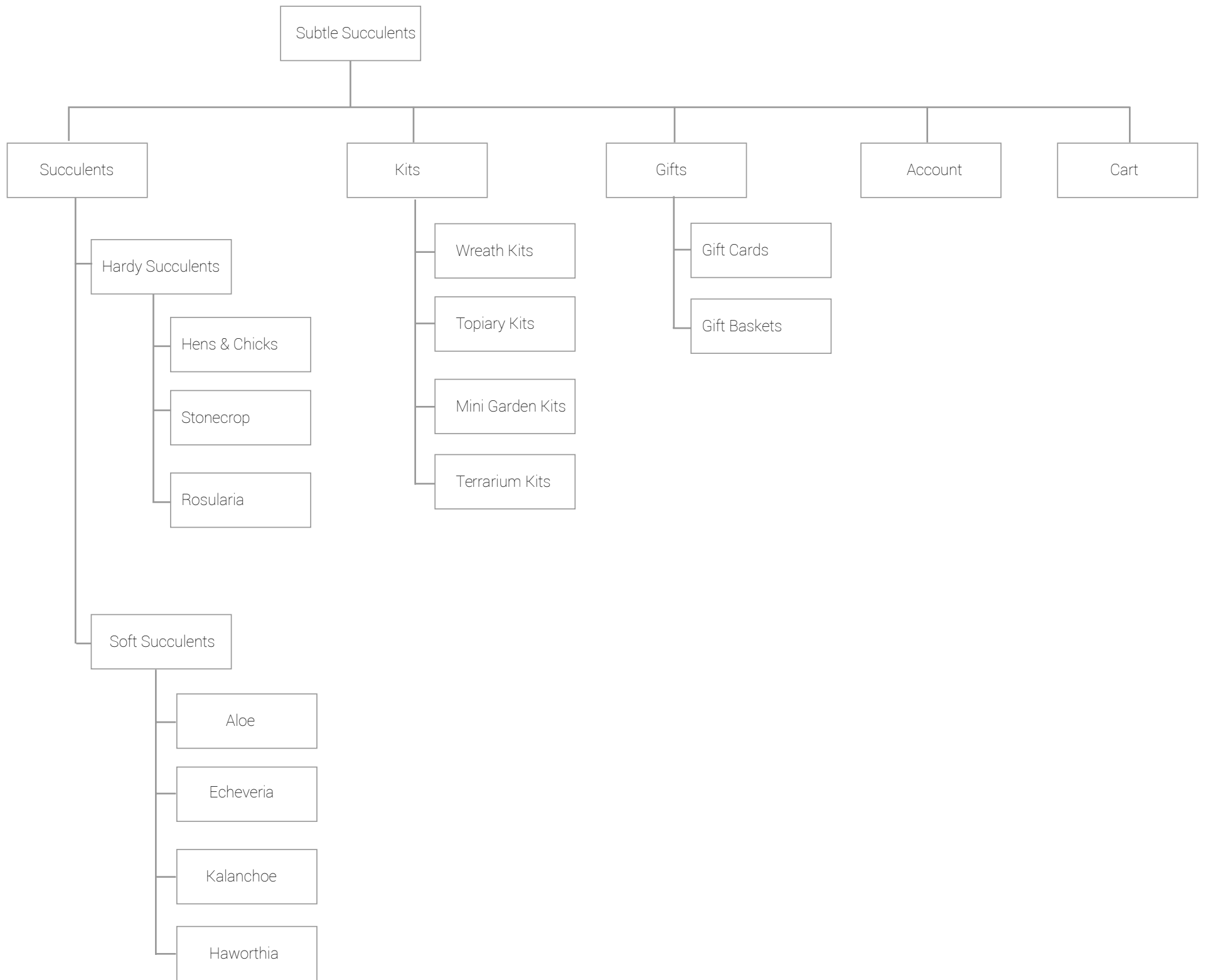
SITEMAPS (FLOWCHARTS)



Many Uses

The tool for documenting and representing the architecture of a site or project is the flowchart or sitemap. The flowchart shows the hierarchy of information and connections users may follow to navigate the content. The flowchart is used for many purposes such as:

- Defining content hierarchy
- Navigation
- Communicating with client, team members, other stakeholders
- Managing division of labor, timeline of project development process
- Pricing and understanding full scope of the project undertaking



Common Symbols in Site Maps

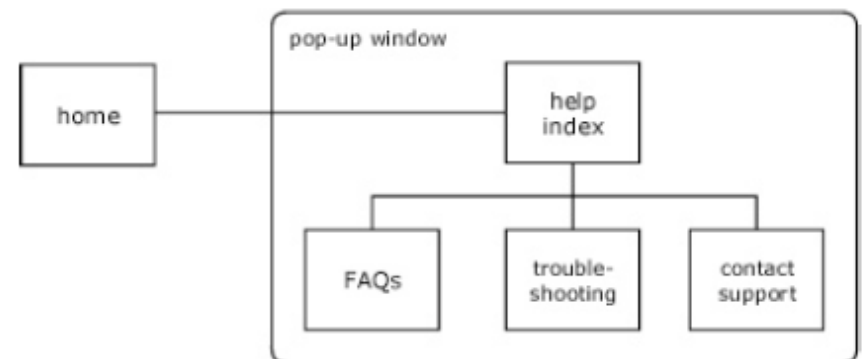
Pages, Files, Stacks



Connectors/Arrows



Commonalities



Consistency

- Some authors, experts advise the lines and arrows for connectors exactly touch the edges of boxes. More importantly be consistent and establish a rule for how the connectors touch or overlap boxes.

Alignment

- Boxes that represent content with equal importance in the hierarchy should be aligned on the same baseline, the same size and should be evenly spaced.

